



PUMA[®] **SGB[®]** Knives



6116393L Skinner

See Page 5

Legendary German Steel Blades

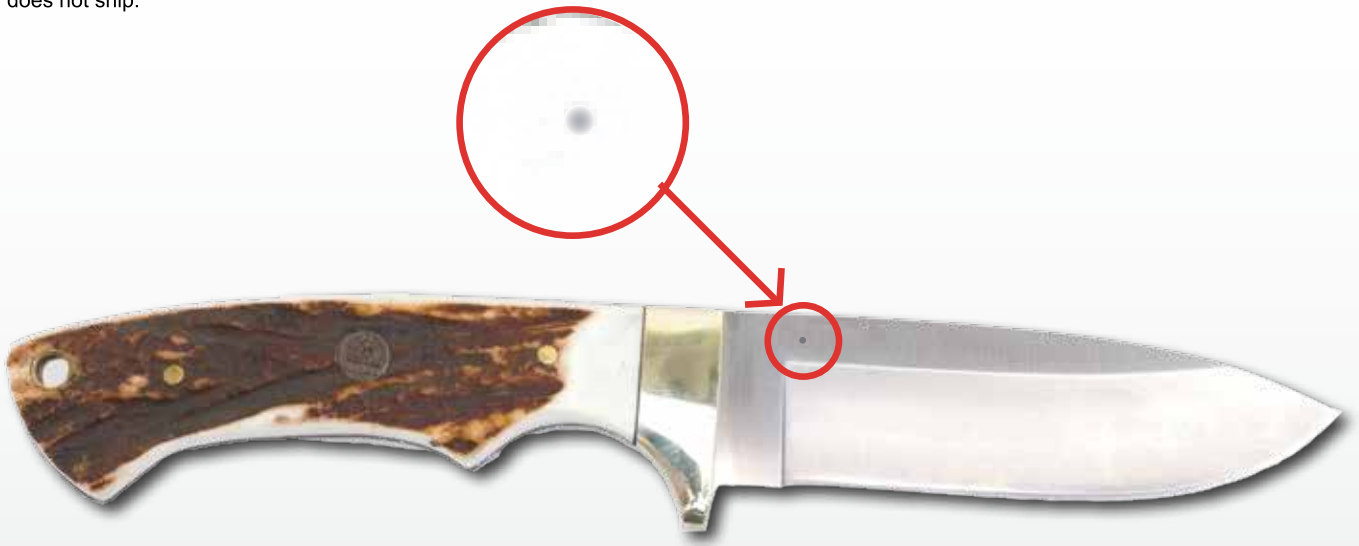
PUMA[®] Knife Company USA



When it matters, would you prefer German steel or Chinese steel?™ PUMA® SGB® knives are made with German steel blades. Each blade is Rockwell tested to ensure hardness between 55 and 57 and bears the dot of a Rockwell proofmark. These knives deliver the performance of superior grade 1.4116 German Cutlery steel at popular price points. If you are looking for a knife that delivers legendary German steel performance, look no further. PUMA® SGB® German steel Knives use the exact same steel produced in Solingen, Germany as the traditional PUMA® German knives, but the blades are assembled into complete knives in Asia. The same attention to detail is taken with the materials, fitting, and finishing, so you can now carry a real PUMA® German steel knife at a new popular price.

PUMA® SGB® GERMAN STEEL PROVES IT

Lots of companies talk about the quality of their steel. PUMA® SGB® German Steel proves it. We proof every single German steel PUMA® SGB® knife for hardness so that we know it will get razor sharp, hold a great edge, and still be easy to sharpen. If you examine the right hand side of your knife blade, you will see a small indented dot on the blade made by a diamond-pointed needle. This small dot is the “proof mark” from a Rockwell hardness tester and is your personal assurance that your knife will deliver the PUMA® quality promise. If it does not pass, it does not ship.



Warranty

PUMA® SGB® warrants this product to be free of defects in materials and workmanship for as long as it is owned by the original owner. PUMA® SGB® will repair or replace any such defective product when it is returned by the original owner. The repair or replacement will be without charge except for reasonable shipping, handling, and insurance charges. See dealer or website (www.pumaknifecompanyusa.com) for more information. A Return Authorization is required prior to sending product back for service. A receipt is required for any knife with a 2012 or later date code.

Table of Contents

Page 3 - 6	Puma® SGB® Stag Hunting Knives
Page 7	Puma® SGB® Micarta Handle Hunting Knives
Page 8	Puma® SGB® Wood Handle Hunting Knives
Page 9	Puma® SGB® Bone Handle Knives
Page 10	Puma® SGB® Spring Assist
Page 11	Puma® SGB® Tactical
Page 12	Puma® SGB® Survival
Page 13	Puma® SGB® Every Day Carry Wood Handles
Page 14	Puma® SGB® Every Day Carry Mixed Handles
Page 15	Displays, Gift Tins and Clampacks
Page 16	Website information

PUMA® SGB® Stag Hunting Knives

Plain and simple, the Puma® SGB® Fixed Blade hunting knives offer the best value and function of any hunting knives available on the market today. Compare the features of our heirloom-quality knives with others on the market:

1.4116 German Cutlery steel, genuine stag handles, brass finger guard and pins, brass-lined lanyard holes and large assortment of blade styles to accommodate any outdoorsman's field dressing or skinning needs. All PUMA® SGB® Stag handled knives now come with top grain leather sheaths that are 100% vegetable tanned and feature a rich, durable brown aniline finish that lets the full beauty of the leather show through.

NEW!

6542040S Switchback

4.1" Blade - Stag Scales

**NEW
for 2016**

NEW!

6817800S Sierra

3.9" Blade - Stag Scales

NEW!

6817900S Highlander

4.3" Blade - Stag Scales

NEW!

6818000S Bighorn

3.9" Blade - Stag Scales

NEW!

6817700S Renegade

3.9" Blade - Stag Scales

6818200S Buffalo Skinner II

3.9" Blade - Stag Scales

NEW!

Knives on this page come with a Leather Sheath





PUMA® SGB® Stag Hunting Knives



6817200S Buffalo Hunter

5.7" Blade - Stag Scales



6817300S Deadwood Canyon

3.8" Blade - Stag Scales



6817100S Saddleback

3.8" Blade - Stag Scales



6817600S Badlands

4.0" Blade - Stag Scales



6817500S Frontier

3.3" Blade - Stag Scales



6810040S Mule Deer Hunter

3.5" Blade - Stag Scales

Knives on this page come with a Leather Sheath





6540040 Coyote

3.8" Blade - Stag Scales



6116393L Skinner

5.2" Blade - Stag Scales



6116396L Bowie

6.7" Blade - Stag Scales



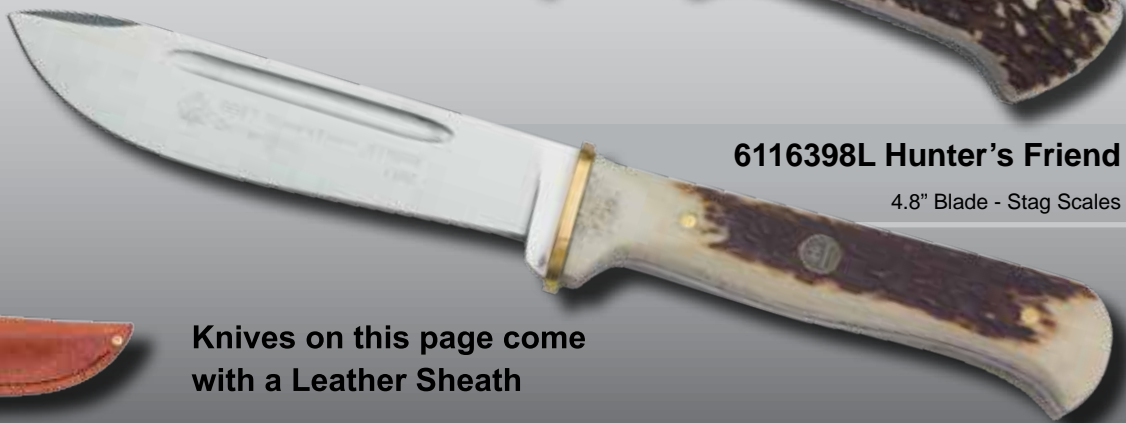
6816050L Elk Hunter

4.0" Blade - Stag Scales



6817000S Halfmoon

5.2" Blade - Stag Scales



6116398L Hunter's Friend

4.8" Blade - Stag Scales



Knives on this page come with a Leather Sheath



PUMA® SGB® Stag Hunting Knives

6816300L Wildcat

4.6" Blade - Stag Scales



6530040 Blacktail

3.2" Blade - Stag Scales



6116382L Trail Guide

4.8" Blade - Stag Scales



6561100 SP Drop Hunter

3.1" Blade - Stag Scales



6809022L Pro-Skinner II

3.1" Blade - Stag Scales



Knives on this page come with a Leather Sheath



PUMA® SGB® Micarta Handle Hunting Knives

Micarta has been used as knife handles for many years. First developed by George Westinghouse as early as 1910. Micarta is a brand name for composites that have been layered or impregnated with a wide range of fabrics or canvas. This layering gives our knife handles a beautiful appearance, very durable, and extremely resistant to the contracting and swelling due to exposure to cold and heat. Puma SGB Micarta Handled fixed blade knives feature 1.4116 German Cutlery steel blades and are Rockwell proofed.



6530010 Blacktail

3.2" Blade - Black Micarta Scales



6540000 Coyote

3.8" Blade - Black Micarta Scales



6817200M Buffalo Hunter

5.7" Blade - Black Micarta Scales



6116386 Bowie

6.7" Blade - Black Micarta Scales



6817600M Badlands

4.0" Blade - Black Micarta Scales



6818100M Nomad

6.3" Blade - Black Micarta Scales

Knives on this page come with a Ballistic Nylon/Leather trimmed Sheath



PUMA® SGB® Wood Handle Hunting Knives

6116396W Bowie

6.7" Blade - Jacaranda Wood Scales



6116393W Skinner

4.7" Blade - Jacaranda Wood Scales



6816050W Elk Hunter

4.0" Blade - Jacaranda Wood Scales



6561000 SP Drop Hunter

3.1" Blade - Pakkawood Scales



6810040W Mule Deer Hunter

3.5" Blade - Jacaranda Wood Scales



**Knives on this page come with a
Ballistic Nylon/Leather trimmed Sheath**



PUMA® SGB® Trophy Care Set - Set includes Skinning knife with gut hook, caping knife, fleshing knife and genuine top-grade leather sheath.



6583000 Trophycare Set

2.8" Blade - White Bone Scales



6817200T Buffalo Hunter

5.7" Blade - White Bone Scales



6817200B Buffalo Hunter

5.7" Blade - Jig Bone Scales



6817300T Deadwood Canyon

3.8" Blade - White Bone Scales



6810040T Mule Deer Hunter

3.5" Blade - White Bone Scales



6581080 Snow River 8"

3.5" Blade - White Bone Scales

Knives on this page come with a leather sheath



Spring Assisted Opening Knives

6513507 Pounce3507

3.5" Blade - Black Aluminum Scales



6613007 Swoop G10

3.0" Blade - G10 Scales



6613310 Strike

3.3" Blade - G10 Scales



6613015 Surge

3.5" Blade - G10 Scales



6624002 Blackcat45 Drop

3.5" Blade - G10 scales



6624003 Blackcat45 Tanto

3.5" Blade - G10 scales



6625002 Blackcat55 Drop

4.1" Blade - G10 scales



6625003 Blackcat55 Tanto

4.1" Blade - G10 scales



Each PUMA® SGB® knife is made with 1.4116 German Cutlery steel for extended blade life. Each blade is individually tested to ensure hardness between 55 and 57 and bears the dot of a Rockwell proof mark. The Swoop, Strike, Surge and Blackcats have lightweight, durable G10 handles and the Pounce features textured aluminum scales. All feature thumbknobs and beltclips.



6503516 Bobcat3516

3.5" Blade - Aluminum Scales, Beltclip



6622002 Alleycat Drop

3.3" Blade - Aluminum Scales



6622003 Alleycat Tanto

3.3" Blade - Aluminum Scales

The Bobcat, Alleycat and Stonewashed TAC Folder are liner lock knives that feature 1.4116 German Cutlery steel with a Rockwell hardness of 55-57. All feature thumbknobs and beltclips. The Alleycat knives have a serrated edge. The stonewashed SW TAC Folder knife has belt cutter and windshield breaker.



6650701 SW TAC Folder

3.4" Blade - Steel Scales



6610004 Bigcat 10 Clip Point

4.7" Blade - G10 Scales



6612004 Bigcat 12 Clip Black

6.7" Blade - G10 Scales



Fixed Blade Knives on this page come with a Kydex Sheath



7205001 Forever Knife XP Green Drop w/ Firestriker

4.7" Blade - Comolded Rubber Handle



Forever Knife XP Green Drop w/ Firestriker

As the name suggests the Forever Knife is built to last. The thick (5mm!) 440 stainless steel, full tang blade is wrapped in the same durable co-mold design as the machetes. The knife comes with a ballistic nylon sheath and features a fire striker. The fire striker has its own pocket and snap attached to the front side of the knife sheath.

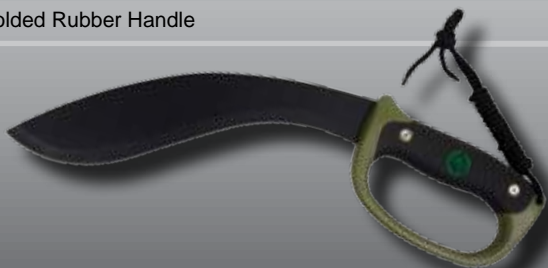
PUMA® Machetes

PUMA® machetes are designed to power through the work you do. Whether clearing brush and grass or building duck blinds, full tang PUMA® machetes have enough weight to carry through and cut. The 3mm thick 3CR14 stainless steel blade is hefty enough that less strokes will do more work than lighter machetes. The comolded grip is designed to be easy to hold on to and the D handle shape protects your hand. There is even an adjustable wrist strap for additional safety while swinging away.

The ballistic sheath has straps to hold the machete in place and rivets to keep it from cutting through. Belt loop for convenient carry. Available in traditional Bush style or Kukri designs. Made in China.

7751700 Kukri17 Machete XP

11.4" Blade - Comolded Rubber Handle



7301000 Tomahawk XP Green

3.1" Blade - Comolded Rubber Handle



7302000 Packable Hatchet XP Green

3.8" Blade - Comolded Rubber Handle



7752300 Bush23 Machete XP

15.9" Blade - Comolded Rubber Handle



PUMA® SGB® Everyday Carry Wood Knives

Classic Jacaranda Wood Lockback SGB® folding Knives have been in the Puma line since the 1960s. These time-tested designs feature 1.4116 German Cutlery steel hollow ground blades, brass pins, brass bolsters, and brass liners.



6169590W Gentleman

2.3" Blade - Jacaranda Wood Scales



6169600W Bear

2.8" Blade - Jacaranda Wood Scales



6169610W Whitetail

3.1" Blade - Jacaranda Wood Scales



6169620W Warden Wood

3.7" Blade - Jacaranda Wood Scales



6169623W Warden with Saw

3.7" Blade - Jacaranda Wood Scales

The PUMA® SGB® Heritage Series knives - based on some of the best-selling slip joint knives ever in the history of PUMA®. Originally introduced in the early 1970s, the Heritage knives were among the most popular PUMA® slip-joint knives ever made.

All of these knives features 1.4116 German Cutlery Steel Blades, Brass liners, nickel-silver bolsters, Jacaranda Wood Scales, and an easy-to-open slip joint design. The rounded edges and size makes it easy to carry these knives in your pocket. The Gelder even features a brass loop for attaching the knife to a chain or cord. Each blade is individually tested to ensure a Rockwell hardness between 55 and 57 and bears the Rockwell proof mark as proof.



6416536 Pocket Friend

3.0" Blade - Jacaranda Wood Scales



6416835 Junior

2.6" Blade - Jacaranda Wood Scales



6416572 Senior

3.0" Blade - Jacaranda Wood Scales



6416666 Gelder

2.8" Blade - Jacaranda Wood Scales



6340035Y Lonestar30 Lockback

2.8" Blade - Yellow Bone Scales



6340035W Lonestar30 Lockback

2.8" Blade - White Bone Scales



6410631S Trapper

3.0" Blade - Stag Scales



6410631W Trapper

3.0" Blade - Jacaranda Wood Scales



6440632B Grand Trapper

3.3" Blade - Bone Scales

Also available in stag (6440632S)



6410675S Stockman

3.0" Blade - Stag Scales

Also available in wood (6410675W)



6410676W Birdknife Hook

3.0" Blade - Jacaranda Wood Scales



6503530 Vintage3530

3.5" Blade - Red Pakkawood Scales



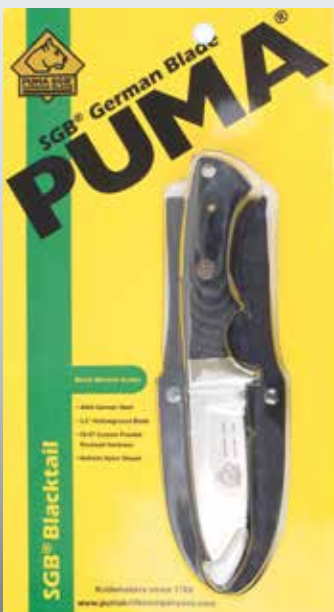


PUMA® Knife Company USA offers a wide variety of Display cases, Display stands, gift tins, and clams to help you merchandise PUMA® SGB® knives. The display case is designed as a stand-alone, lockable counter top piece, has lockable space for extra stock, and is available with a variety of knives. The Stag antler tip display is designed to hold a knife upright and is made from the same antlers we use on our stag-handled knives! Gift tins are ideal for gift-giving occasions such as Father's Day, Graduation, Black Friday and Christmas and are available with a variety of knives.

Displays



Gift Tins



Clams

Clams are available on a variety of knives at a minimal upcharge. Please ask your sales rep about availability.

If you do not see it here in our catalog, please visit our website at www.pumaknifecompanyusa.com for the largest selection of PUMA Knives available in the United States.

The screenshot shows the PUMA SGB website interface. At the top, there is a navigation bar with the PUMA SGB logo (a tiger head in a diamond shape) on the left, the text "Hunting, Sporting, Outdoor Knives" in the center, and a shopping cart icon and search bar on the right. Below the navigation bar is a menu with the following items: "WHY PUMA*", "FIND YOUR NEXT PUMA* KNIFE", "SHEATHS", "WARRANTY/RETURNS", "CONTACT US", and "LINKS". On the left side, there is a "Browse Knives" section with a "New for 2014" sub-section and a list of categories: "Hunting", "Tactical", "Spring Assist", "Pocket Clip", "Flip Knives", "Every Day Carry / Pocket", "Survival / Bushcraft", "Water Sports / Marina", "Machetes", "Sheaths", "Accessories", and "Specials". The main content area is titled "FEATURED PRODUCTS" and displays six knives with their names below them: "WARDEN", "WHITE HUNTER", "FOREVER KNIFE", "POUNCE3507", "SW TAC FOLDING", and "BIGCAT 10". At the bottom of the website, there are links for "Shipping Information", "Returns / Exchanges", and "Privacy Policy".



PUMA® Knife Company USA 13934 W 108th Street Lenexa, KS 66215 (913) 888-5524
PUMA® is a trademark of PUMA® GmbH Solingen and is used under license by PUMA® Knife Company USA.